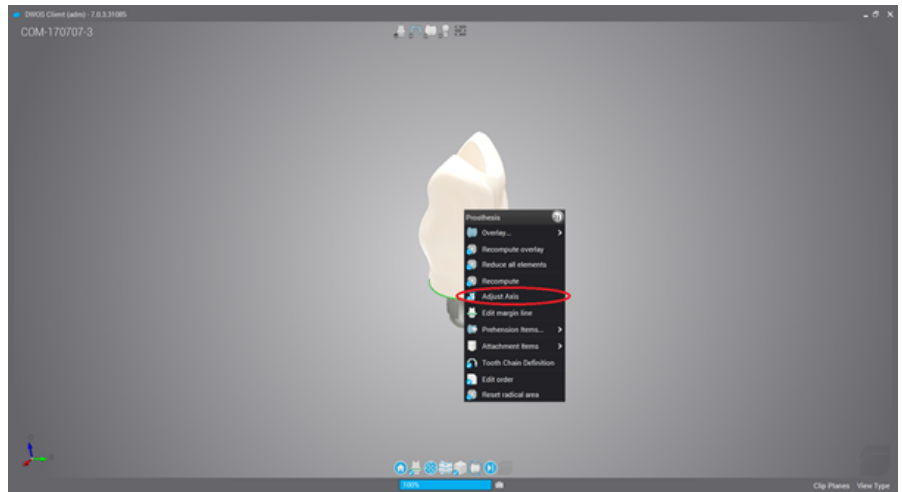


## INSTRUCTIONS FOR USE - NEW VERSION DENTALWINGS 7 TO WORK AT AN ANGLE

### DYNAMIC ABUTMENT® SOLUTIONS LIBRARY

When modeling the structure, the screw channel is also changed. With the new version of Dentalwings (Version 7 or later) the adjustment of the angled channel is done differently to previous versions.

As shown in the following image, when modeling, click the right button on the structure and choose Adjust Axis.



Once you click on the structure, the following options appear on the right of the screen. To change the screw channel angulation, proceed as described below.

First and foremost, click on Reset parameters so that the channel fits the Dynamic Abutment Solutions library. Then click on Show angles and finally the angular channel is modified by manually moving the blue sphere that appears on the channel of the screw until achieving the desired angulation.

There is also the option of manually enter the angulation number, as you can see, there is an option called Angle Restriction (deg) where the desired angulation can be typed.

