

Fiber Anchorage for Orthodontic Molar Uprighting

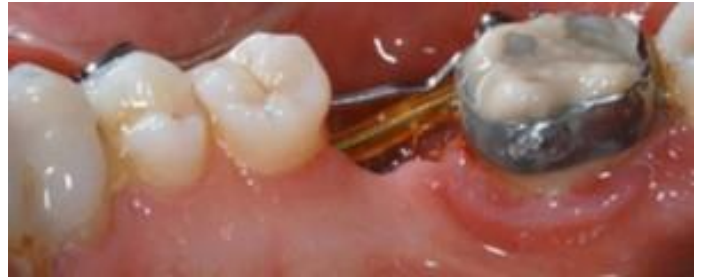
Fiber Orthodontic Bracket Case



A 45-year-old female presented for examination. The occlusion was acceptable, however the patient was missing the mandibular right 1st molar that had been previously extracted. She wished to have that tooth replaced by an implant, however there was no space available in the arch, and the 2nd and 3rd molars were mesially inclined. Therefore, the treatment plan was to correct orthodontically the severe mesial inclination of the mandibular right 2nd and 3rd molars before implant surgery.



As the patient was very concerned about the esthetic appearance of the orthodontic appliance, it was decided to cement only one band on the 2nd molar and use a .019" x .025" TMA cantilever to upright the tooth. Anchorage was reinforced on the remaining teeth by means of a long glass Fiber-Reinforced Composite (Fiber 1.2mm) bonded on the lingual side from canine to canine, and on the labial side from 2nd premolar to right canine. The TMA cantilever was directly connected to the labial FRC by means of a stainless steel ligature.



After 3 months of treatment, a second TMA cantilever was added to control the vertical movement of the 2nd molar.

Result after 7 months of orthodontic therapy: Please note the good up righting of the 2nd molar and its excellent vertical control.

For more information, contact Preat at 1-800-232-7732 or visit preat.com