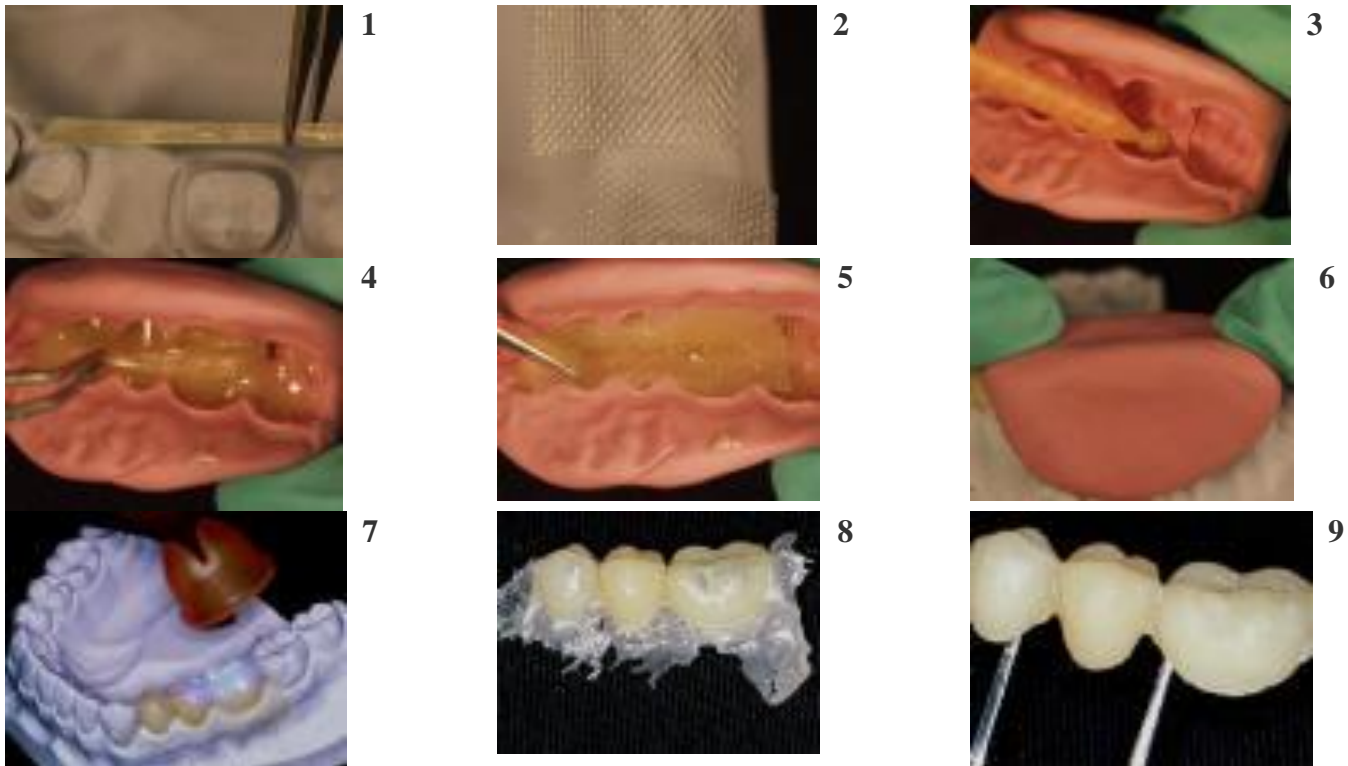




[www.preat.com](http://www.preat.com)

800-232-7732

## eFiber Direct provisional bridge



## Direct provisional bridge

Note! The photos have been taken from the cast, but the method is for direct use in the mouth.

- 1- Prepare an impression of the area of the intended provisional bridge. Prepare a space for the crowns into the impression. Prepare the abutments in the desired shape. Cut the eFiber and Perma Mesh in suitable size pieces. Single layers of eFiber and Perma Mesh are enough. Add a second layer when the bridge contains more than one pontic or when in doubt.
2. Fill the mould with the provisional resin.
3. Position eFiber over the abutments and across the pontic.
4. Position the Perma Mesh pieces in the mold on top of the abutment holes. Press the fibers slightly into the provisional resin.
5. Press the impression onto the abutments and allow to cure.
6. Remove the impression and light cure for 40 seconds at each crown and at the pontic, if you are using a dual-curing provisional resin.
7. Refine the cured bridge. The exposed cured fibers are easy to grind and polish to a high shine.
- 8.
- 9.