



eFiber Occlusal splinting

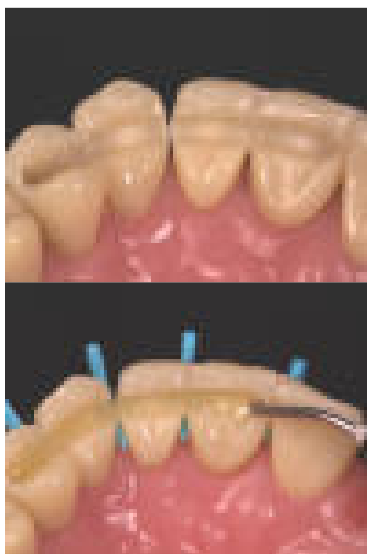
www.preat.com

800-232-7732

Occlusal splinting

Step-by-step:

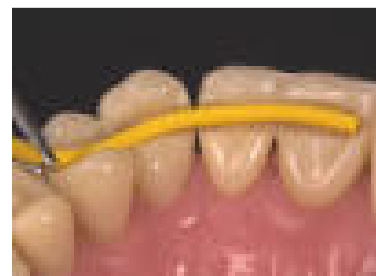
1. Prepare a groove up to 2x2 mm when necessary for the space required by the splint.
2. Cut a suitable length of the eFiber.
3. The length should be 1-2 mm shorter than the groove.
4. Prepare the attachment surfaces of the dentin and the enamel in the usual way, by etching and bonding. Finally apply a thin layer of flow composite on the tooth surface to obtain better adaptation of the splint.
5. Apply the splint in the intended position with the tweezers and a suitable hand instrument, such as an amalgam carrier or a cord packer.
6. Apply the splint in the intended position with the tweezers and a suitable hand instrument, such as an amalgam carrier or a cord packer.
7. Press the fibers into the groove and ensure the fiber to tooth contact' to the tooth surface by pressing the splint with the hand instrument. It is also useful to use a wide blade, such as Stick Stepper or a spatula, to limit the curing light to the intended area. Light cure the splint on the first tooth for 5-10 s. Direct the light away from the rest of the splint to avoid premature curing.
8. Repeat the point 7 until the entire splint is in place.
9. Repeat the point 7 until the entire splint is in place.
10. Repeat the point 7 until the entire splint is in place.
11. Finally cover with flow composite or composite and light cure the whole splint.



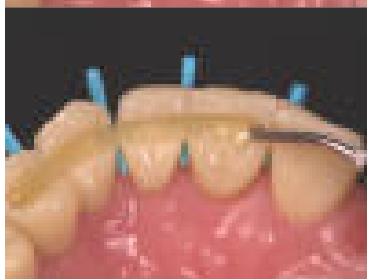
1.



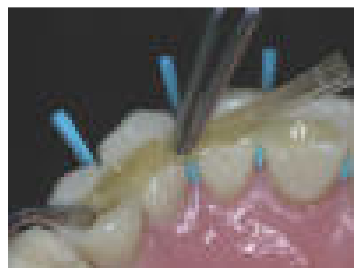
2.



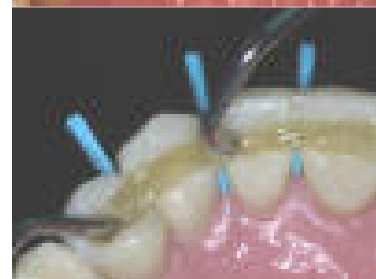
3.



4.



5.



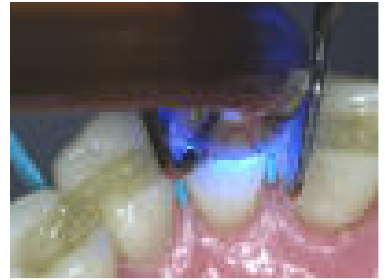
6.



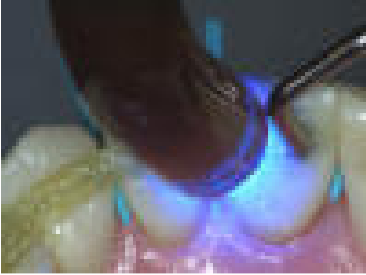
7.



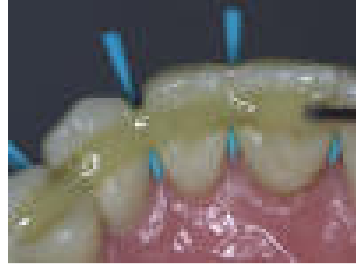
8.



9.



10.



11.